



Project H.O.M.E.'s

Dwelling Place

JUNE 2005

NONE OF US ARE HOME UNTIL ALL OF US ARE HOME

PROJECT H.O.M.E.

(Housing, Opportunities for Employment, Medical Care, Education)

empowers people to break the cycle of homelessness, address the structural causes of poverty, and attain their fullest potential as members of society. Our work is rooted in our conviction of the dignity of each person and our belief that all are entitled to decent, affordable housing and quality education, employment, and health care. We achieve this through street outreach; supportive housing; comprehensive services; community development; employment training and opportunities; adult and youth education; health care; environmental enhancement; and political advocacy.

RESIDENCES

1515 and 1523 Fairmount Avenue
Diamond Street Residences, 2826-29 Diamond St.
In Community, 1229 Chestnut St.
Kairos House, 1440 N. Broad St.
Kate's Place, 1929 Sansom St.
Rowan I, 2729-A W. Diamond St.
Rowan II, 1901 N. Judson St.
St. Columba, 4133 Chestnut St.
St. Elizabeth's Recovery, 1850 N. Croskey St.
Women of Change, 21st & Arch Sts.

SUPPORT SERVICES & PROGRAMS

Adult Education, Employment & Arts
Community Development Corporation
Education and Advocacy
Honickman Learning Center and
Comcast Technology Labs
Outreach Coordination Center
Volunteer Program

BUSINESSES

Our Daily Threads Thrift Shop, 215-232-6322
Back Home Café and Catering, 215-232-6311

ADMINISTRATION

215-232-7272

HOMELESS OUTREACH HOTLINE

215-232-1984

HUMAN RESOURCES HOTLINE

215-232-7219 x5200

www.projecthome.org

ON THE RISE

IF YOU LOOK JUST right, you'll see the church is still there.

The stately St. Elizabeth's church was a staple in the neighborhood for decades. But in 1993 the parish was closed. Abandoned and in disrepair, the church stood like a ghost of better days. And as much as neighbors wanted a future for the building, it had to be torn down.

The razing of St. Elizabeth's was a symbol of this North Philadelphia neighborhood. It was more abandonment for an area devastated by economic disinvestment, an eroding manufacturing base, and migration of families and jobs. Into the vacuum came poverty, blight, crime, drugs, and despair.

Ten years later, though, you still see St. Elizabeth's Church. It's featured on the teeming, colorful mural on the side of the former convent adjacent to the site, now the St. Elizabeth's Recovery Residence. The mural looks out over a beautiful green park, an oasis of peacefulness on the site where the church stood. Also depicted on the mural are the wisdom of the senior citizens and the energy of the youth – the past and future, captured in the present. They look down like angels on the neighborhood.

A DECADE AGO, Project H.O.M.E. embarked on important new initiatives to address the roots of homelessness and poverty. With the invaluable partnership of Crown Holdings (then Crown Cork & Seal), we began a community development plan for the Diamond Street/St. Elizabeth's neighborhood. Our target, a 33-square block

area in lower North Central Philadelphia, is bookended by the 2800 block of Diamond Street, where we opened a residence for formerly homeless men in 1993, and St. Elizabeth's, where we started the recovery house.

Where others might only see blight, we see possibilities. For ten years, we have worked to realize those possibilities. We have engaged in relationship building, community organizing, and strategic planning. We have undertaken the hard but critical work of community revitalization: affordable housing, economic development, educational opportunities, and greening of open spaces.

Quality affordable homes are an essential element for individuals and families to achieve long-term financial stability and well-being for healthy, livable neighborhoods. Important early support from the Lincoln Financial Group, the Sisters of St. Francis, and

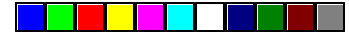
major investment from the Pennsylvania Housing Finance Agency and the City of Philadelphia allowed us to begin a series of housing initiatives in the neighborhood. Through development of new units, renovation programs to preserve existing homes, and housing counseling for low- and moderate-income individuals and families, the tide is turning from abandonment to ownership.

Another part of our community revitalization is to "clean and green" **neighborhood open space**. Following a comprehensive plan, landscapes of trash and neglect are giving way to shrubs, trees, gardens, flower beds, repaved walkways,

(continued on page 2)



Celebrating a Decade of Community Revitalization



ON THE RISE *(continued from page 1)*

and playgrounds. Garden Keepers – neighborhood volunteers – are committed to ongoing maintenance, care, and cleaning of public spaces.

At the core of neighborhood decline is the hemorrhaging of economic opportunity. Out of Project H.O.M.E.'s relationships with local businesses, and with the partnership of the William Penn Foundation and Klehr, Harrison, Harvey, Branzburg & Ellers LLP, was born "Ridge on the Rise," an **economic development strategy** for the Ridge Avenue commercial corridor. Various efforts are currently underway to strengthen existing businesses and attract new ones. Meanwhile, Project H.O.M.E.

works to enhance the income potential of neighborhood residents through a variety of programs, including adult learning, job-readiness training, career fairs, computer training, and more.

Education is a door out of poverty and a building block of solid communities. Project H.O.M.E.'s Honickman Learning Center and Comcast Technology Labs is at the cornerstone of our community revitalization work. Specialized programs for teens include a young playwrights group, a neighborhood newspaper, photography, video production, film editing, and graphic design – some in partnership with neighborhood public schools – while the younger kids and parents learn to be users of technology.

We also strive for a **healthy neighborhood**. With seed money from Independence Blue Cross and the Independence Foundation and in partnership with Jefferson Family Medicine Associates, our Community Health Initiatives Program provides a range of community-based health services. Neighborhood youth and adults have access to

health professionals for basic health care needs, health education, and referrals – as well as specialized service to homebound adults.

IT'S BEEN QUITE A DECADE, and we are thrilled to witness its fruits. Increased homeownership has brought



Photo by Harvey Frinkle

Sister Mary Scullion and William Avery, former CEO of Crown Cork & Seal, at a community festival.

greater neighborhood stability and a renewed sense of pride. Increased commercial occupancy, renovations of commercial and public spaces, and a stronger business association are early signs of economic revival. Many of our kids are improving in school and even realizing their dream of college. Dozens of lots have been transformed into welcoming green spaces. Perhaps most important, our first ten years

of community development have birthed a web of relationships within the community – neighbors, businesses, corporations, religious congregations, public officials – all of whom share a commitment and vision.

Enormous challenges still lie ahead. Decades of disinvestment cannot be turned around overnight. Larger forces threaten to hamper our efforts: an inadequate and under-resourced education system, a weak job market, the continuing stigma of racism. Gun violence continues to plague our communities (see page 4). Perhaps the most ominous danger is the current political atmosphere, which could result in dramatically scaled-back public investments in critical community programs. If some of the proposed federal cuts become real, much of our work in the neighborhood could come to a grinding halt.

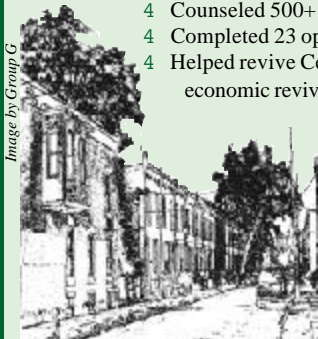
We can meet those challenges. Over the past ten years we have reaped strategic vision, hard-earned expertise, community involvement, and a wide network of supporters, donors, and partners. And we have angels looking over us.

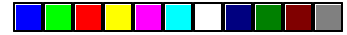


A Decade of Community Revitalization...

- 4 Leveraged over \$50 million towards housing, economic development, and community services
- 4 Rehabbed 19 homes and sold them at affordable prices (nine more to be completed by autumn 2005)
- 4 Provided supportive affordable homes for 71 families since 2000
 - 4 Counseled 500+ people in homeownership readiness
 - 4 Completed 23 open space projects (greened lots, parks, community gardens, playgrounds)
 - 4 Helped revive Cecil B. Moore/Ridge Avenue Business Association; developed strategic plan for economic revival of Ridge Avenue commercial corridor
 - 4 Opened Honickman Learning Center and Comcast Technology Labs (2004); served over 400 people, including 228 students and 175 adults
 - 4 Served over 700 students in after-school programs
 - 4 Served over 250 children and adults through our Community Health Initiative
 - 4 Through our Scholars Program, subsidized tuition of more than a dozen students from low-income families to attend private schools and go on to college
 - 4 Organized the North Philly Footstompers Drill Team, which has won national awards
 - 4 Developed two neighborhood murals depicting local history

Image by Group G





THE PEOPLE IN OUR NEIGHBORHOOD

No community development program can succeed without the energy, leadership, and vision of business, youth, elected officials, and other residents. The voices below are of people who make neighborhood revitalization possible.

Clarence "Boo-Boo" Hendley was born and raised in the St. Elizabeth's neighborhood and has been a Footstomper since 1999. He is currently a Mansfield University sophomore studying business financing and playing football.



"When I was little, there weren't after-school programs or anything for my friends and me to do. After football practice, my friends and I would come to the

Center for Footstompers practice which kept us active. Ms. Helen [Footstompers "Coach" and Community Organizer] is there for us through thick and thin. If I'm ever having trouble, she's the first person I'd call. It's that way for a lot of kids in the neighborhood."

Victor Pinckney owns of VCVA Management and Laundromate-Laundromat (Cecil B. Moore Avenue and 28th Street) and is a member of the Cecil B. Moore/Ridge Avenue Business Association (CRABA), which promotes local businesses, addresses quality of life issues, and cleans up the area.



"This is a great neighborhood. Through the CRABA, I no longer feel like I'm alone on an

island. I focus on giving back to the community as a way to say thank you for doing business with us. We care about the community and will give back in positive ways. It takes time to reach out and lead by example. Eventually, as people see what you are doing, they pitch in and help."

Regina Major has lived on the 1900 block of North



23rd Street for 42 years and, as Block Captain, she keeps the block clean, goes to community meetings, works to keep crime down, and serves as a role model for her neighbors. She is also a crossing guard in the neighborhood.

"Project H.O.M.E. is renovating 15 houses on my block so that it will eventually be 100 percent occupied. I'm so happy that we are fixing them up, not tearing them down. I've been here my whole life. This is home. It's easier to bring drugs into a neighborhood than to get them out. That's why people have to pull together. If you see something, say something."

Denise "Neicey" Frank purchased a rehabbed rowhouse through Project H.O.M.E.'s first-time homebuyer program four years ago. She has lived in the neighborhood for 36 years and has been a teaching assistant for the last twelve. Her three children are in Project H.O.M.E. after-school programs.



"Project H.O.M.E.'s housing program let me know you don't have to be a millionaire to buy a house. A mortgage is something that I can afford. Through the housing workshops, I learned how to repair my credit and care for my home. Being a homeowner makes you more responsible, teaches you how to save money, and helps your financial status."



Dwelling Place
Page 3

...The Challenges Ahead (excerpted from Project H.O.M.E.'s Strategic Plan)

- ❖ Foster community mobilization and leadership development
- ❖ Increase homeownership through development of quality, affordable housing (127 units by 2010)
- ❖ Prevent further blight through targeted block preservation programs; transform five blocks from 65 percent to 100 percent occupancy
- ❖ Increase capacity and utilization of housing counseling services
- ❖ Support the health and wellness of neighborhood residents
- ❖ Further economic viability and physical development of Ridge Avenue
- ❖ Develop and implement crime prevention and public safety initiatives
- ❖ Build an economically diverse mixed-income neighborhood
- ❖ Continue to leverage appropriate levels of public and private investment in the community
- ❖ Continue to offer programs that enhance educational success of neighborhood youth and assist lower-income families to bridge the "digital divide"



These homes on the 2700 block of Sedgley Street will be rehabilitated for sale to first-time homebuyers and represent the first new homeownership initiative in the Diamond Street neighborhood in decades.



TURNING THE TIDE

Community Residents Fight Back Against Gun Violence

FOR ALL THE PROGRESS being made by neighbors and Project H.O.M.E. in the St. Elizabeth's/Diamond Street community, one problem continues to present enormous challenges: public safety. Any neighborhood affected by economic disinvestment, poverty, and blight will also feature high crime and violence (much of it drug related). The police sector encompassing our neighborhood is among the most violent in a city whose murder rate is three times New York's. Recent months have had an alarming number of homicides – nearly 150 citywide since January.

Through extensive organizing with neighbors, Project H.O.M.E. is formulating a plan to face the violence head-on. We have already made some progress in trying to build the peace. Through collaboration with the Police Department, we have a new dedicated patrol, with a goal of greater police presence in the near future. The City has been helpful in responding to nuisance properties and suspected illegal business activity. Together with police, we will help implement a recognition program for the "Officer of the Month," to bolster morale among officers with very hard jobs.

One dramatic new initiative took place each Wednesday in May, when clergy from throughout the St. Elizabeth's/

Diamond Street neighborhood took to the streets to make a stand against violence. The clergy walks started at Project H.O.M.E.'s Honickman Learning Center and Comcast Technology Labs, sending the message that to truly transform the neighborhood, we must start by saving our kids.

By working with neighbors, police, board members, and elected officials, Project H.O.M.E. hopes to report decreased crime in the coming year. Violent crime is a serious challenge, but as with housing, education, and economic development, transformation is possible. Neighborhood outreach, public education, community organizing, and collaboration will al-

low us to turn the tide and make our streets safe.

Special thanks to: Harold and Lynne Honickman for their support, including a generous donation of equipment for the special police patrols, technical assistance on security measures, and organizing efforts with city officials and other concerned Philadelphians; the clergy and police of the St. E's/Diamond Street neighborhood; Project H.O.M.E. staff Priscilla Bennett, Helen Brown, Cheryl Davis, Carolyn Placke, and Chris Whaley; Police Officer Curtis Ghee, Lieutenant Anthony Floyd, and Captain Wolfson; and Michael Erdos from the Office of the District Attorney.



Neighborhood clergy embark on their weekly safety walk through the neighborhood with police.

ADVOCACY UPDATES

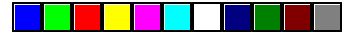
A final draft of Philadelphia's Plan to End Homelessness was endorsed by the Mayor's Taskforce on Homeless Services on May 20. The Plan, entitled **Philadelphia's Ten-Year Plan to End Homelessness: Creating Homes, Strengthening Communities, and Improving Systems**, strives to build on the progress we have made in addressing homelessness. The plan describes new and enhanced efforts to provide housing, healthcare, education, and employment – as well as to realign and redefine many services – to prevent homelessness. Early summer, the final plan will be available at www.phila.gov/oess or by calling Joyce Sacco at the Office of Adult Services at 215-686-7158.

The **Philadelphia Housing Trust Fund** moved closer to reality this spring. Pennsylvania House Bill 139, the state enabling legislation for the Trust Fund, is now awaiting action by the full House. The bill has bipartisan support, led by Representatives John Taylor and Curtis Thomas. *We encourage you to call your elected representatives and ask them to support House Bill 139.* (You can obtain contact information for your State Representative on the General Assembly website, which can be accessed at www.legis.state.pa.us/, and you can read the bill at www.legis.state.pa.us/WU01/LI/BI/ALL/2005/0/HB0139.HTM.) Local legislation for the Trust Fund is also moving quickly.

Hearings on the City Council Trust Fund Bill #050059 are scheduled for early June. We encourage our supporters to contact Council members about the importance of making homes affordable in Philadelphia. *Contact Laura Weinbaum, Director of Public Policy, at 215-232-7272 x3037, for more information.*

On April 5, United States Senators and Representatives came together in a bipartisan effort to help address homelessness nationwide. Both houses introduced the **"Services for Ending Long-term Homelessness Act"** (SELHA), legislation which would create a program in the Department of Health and Human Services to fund mental health, substance abuse, case management, and other services provided in permanent housing.

Project H.O.M.E. has joined with many advocacy and religious organizations in calling for a **moral federal budget** that promotes economic justice and fairness. Unfortunately, the budget resolution that passed on April 28 did not meet the moral standard that many of us had set. You can visit www.saveourservices.org for current information about the federal budget and how you can contact your elected officials to express your views.



EXPERT ADVICE

Project H.O.M.E. was thrilled to welcome Dr. Martha Burt, one of the nation's foremost experts on homelessness, who gave a presentation to our staff and Board of Trustees in March. Dr. Burt shared her perspectives on the best practices toward ending homelessness, ranging from supportive housing that alleviates chronic homelessness to "deep prevention" through community development work. In some of her national analyses, Dr. Burt has cited the work of Project H.O.M.E. as a model organization. Her insights will be formative to our mission and programs in the years to come.

H.O.M.E. provided oversight to the NAC, but the Strawberry Mansion NAC will soon become an independent non-profit organization and a vital part of community revitalization. Please call 215-235-7505 for more information.

vice providers are needed. Follow-up meetings will develop recommendations to strengthen a working partnership between police and outreach workers, in hopes of avoiding future violent altercations.



CROSS COUNTRY OUTREACH

On a daily basis, Project H.O.M.E. responds to requests for outreach services in Philadelphia. Sometimes we receive calls for help from afar. This spring, two of our staff, Cheryl Davis (Chief Operating Officer) and Ed Speedling (Outreach Coordination Center Community Liaison), traveled to Santa Barbara, California, to share insights and ideas with a community seeking to respond to a growing problem of homelessness there. Sister Mary Scullion, our executive director, shared Project H.O.M.E.'s story with the state conference of the Colorado Coalition for the Homeless in Denver, Colorado, offering them insights from our experiences.

NEIGHBORHOOD NEWS

Last year, when Project H.O.M.E.'s new Honickman Learning Center and Comcast Technology Labs opened and the activities of the Diamond Street Community Center moved to the new building, we worked with neighbors to come up with a new use for the old Community Center, located at 2828 Diamond Street. The community wanted a Neighborhood Advisory Committee, or NAC, to provide information on government programs and facilitate dialog about community activity. For its first year, Project

STREET SMARTS

Following an incident early this spring, Project H.O.M.E. and the Mental Health Association met with Philadelphia police leadership about officers' interactions with persons with mental illness. In March, a homeless mentally ill person was approached by police officers on a Center City street. The encounter escalated quickly and violently, and the man was severely beaten. Police agreed with advocates that better training and more effective coordination with outreach workers and ser-

COMMENCING FORWARD

On May 19, Sister Mary Scullion, along with the Honorable Judge Marjorie Rendell, received an honorary degree and spoke at the commencement ceremonies of the University of the Sciences in Philadelphia.



Dwelling Place
Page 5

JOIN US FOR AN EVENING OF TIMELY AND CRITICAL DISCUSSION.

...AND JUSTICE FOR ALL

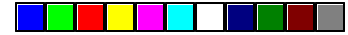
HOW DO WE PUT HOMELESSNESS AND POVERTY BACK ON THE POLITICAL MAP?

Tuesday, June 21 - 7:00 pm
Kate's Place - 1929 Sansom Street

In last year's national elections, issues of poverty and homelessness were virtually ignored by most candidates and voters. How do we put poverty and homelessness back on the political agenda of this nation? What new communication strategies do we need to reach a broader audience? How can the religious community do a better job of raising these as urgent moral and religious issues?

S. Mary Scullion, Project H.O.M.E.'s co-founder, will be one of the featured speakers.

For more information or to RSVP, contact Will O'Brien, Special Projects Coordinator, at 215-232-7272 x3047 or willobrien@projecthome.org.



H.O.M.E. BUILDERS - Working

Page 6 - Dwelling Place

PHENOMENAL FRIENDS



Who: Wade Jackson

Volunteer Since: September 2004

Volunteer Position: Adult Learning and Workforce Development program support

Nature of Activities: Wade is a long-time resident –over 40 years– of the St. Elizabeth’s neighborhood where Project H.O.M.E. does community development. When the Honickman Learning Center and Comcast Technology Labs (HLCCTL) opened its doors, Wade eagerly enrolled in the A+ Computer Repair Program. He soon realized there was something special at the HLCCTL, and now he does everything he can to let his neighbors know about the programs.

Wade’s neighborhood involvement takes many forms: volunteering as a block captain, collecting basic needs for families through his church, and promoting anti-gang activities. In addition, he spends hundreds of hours encouraging his neighbors to get to know Project H.O.M.E.’s offerings of GED and computer classes, job readiness support, and after-school programs (in which his son is a student). His wife is enrolled in the Administrative Support Specialist Career Track program.

Wade has a clear goal in mind for his neighborhood: the success of the youth. He wants them to know that there are boundless opportunities for their lives. Wade calls the HLCCTL a dream come true. As he spreads the word to his neighbors, he encourages them to work hard, and the reward will be more than they can imagine. He speaks from his personal experience, which he says the youth appreciate. Explaining why he spends his days off vigorously promoting the HLCCTL without getting paid, Wade simply says, “I’m doing it from the heart.”

A SPRINGTIME OF GENEROSITY

We extend our deepest appreciation to the following groups and individuals for their generous contributions to Project H.O.M.E. this spring. Their wonderful gifts allow us to continue implementing innovative solutions to the crisis of homelessness and poverty.

- | | |
|------------------------------------|--------------------------------------|
| Bank of America | Nelson Foundation |
| Donna and Jon Boscia | Edward Mannino & |
| Canada Dry Delaware Valley | Antoinette O’Connell |
| Bottling Company | Mr. and Mrs. J. Patrick O’Grady |
| Fairfield County Community | Jim and Beth Paterno |
| Foundation | Patricia Kind Family Foundation |
| John and Chara Haas | L.W. Pierce Foundation |
| Hamilton Family Foundation | The Pew Charitable Trusts |
| The Honickman Foundation | PNC Bank |
| Idyll Foundation | Rohm and Haas Company |
| Barbara and Charles Kahn, Jr. | Sisters of St. Francis - Our Lady of |
| Klehr, Harrison, Harvey, Branzburg | Angels Convent |
| & Ellers LLP | Sts. Peter and Paul Rectory |
| Motorola, Inc. | Wilt Chamberlain Memorial Fund |

A special thanks to our friends at **Chestnut Hill United Methodist Church**, who have faithfully provided wonderful lunches for our periodic Potlatch community arts gatherings.

Thanks to **Jay Schwartz and Secret Cinema** for holding an evening at Project H.O.M.E. in February, which provided a fun night of cinematic entertainment and raised funds for our arts program.

Support Project H.O.M.E. this month with a visit to Duke’s Firehose Company car and truck safety wash – in Wayne, Conshohocken, Blue Bell, and Frazer. You’ll receive a commemorative awareness bracelet with select washes and Duke’s will donate a portion of the proceeds to Project H.O.M.E. in June. Call 1-877-DFC-WASH or go to www.safetywash.com for directions and information.

SUMMER WISH LIST

We welcome donations of the following new items: cleaning supplies; bottled water; twin bed sheet sets, blankets, comforters, and pillows; SEPTA tokens; washcloths and towels; underwear and socks for adults; art/office supplies; toiletries (deodorant, shaving cream, and razors).

For health reasons, Project H.O.M.E. cannot accept used linens, toys, or dishes. Please contact Development Officer Catherine Darin at 215-232-7272 x3021 for more information on donating to Project H.O.M.E..

VOLUNTEER NEEDS

- GED/ABE tutors
- Tutors for basic computer skills
- Assistants for job readiness preparation
- Assistance with cataloging resident art

Contact Volunteer Coordinator Erin O'Brien at 215-232-7272 x3015 or erinobrien@projecthome.org.



Characteristics of Healthy Communities

A healthy community is one where residents can participate in recreational activities and socialize outdoors, day and night, without fear of drugs and crime.

- ❖ Grass, flowers, trees, gardens, clean streets, good lighting
- ❖ Play areas, swimming pool, skating rink, tennis courts
- ❖ Children and adults involved in community beautification
- ❖ Children playing without fear
- ❖ Rehabilitated houses; well cared-for properties
- ❖ Homeownership
- ❖ No drugs or crime
- ❖ Constructive things for teens to do such as jobs, education, and recreation
- ❖ No "Stop and Go" businesses
- ❖ A supermarket, bank, bakery, and drug store
- ❖ Organized community (civic association)
- ❖ Excellent schools that are clean, spacious, and utilized well by community; life skills training
- ❖ Doctors' practices that are committed to the neighborhood
- ❖ Community unity and engagement
- ❖ Respect for youth, elders, and community diversity
- ❖ Involvement of faith community
- ❖ Good paying jobs in the community for neighborhood residents
- ❖ Spiritual and moral wholeness

This list was developed by neighborhood residents through an initiative facilitated by Temple University's University Community Collaborative of Philadelphia.

"If you want to build a ship, don't drum up the people to gather wood, divide the work, and give orders. Instead, teach them to yearn for the vast and endless sea."

- Antoine de Saint-Exupery

Read All About It!



This spring brought a blossoming of media attention to Project H.O.M.E.. Three recent articles from the *Philadelphia Inquirer* have highlighted our work. To read them and others, see the links on our website at www.projecthome.org/aboutus/inthenews.html.

Join us for the

18th Annual Irish Pub Tour de Shore Bike Ride July 23, 2005

FROM: Irish Pub, 2007 Walnut Street, Philadelphia
TO: Irish Pub, St. James & Boardwalk, Atlantic City



WHAT: A 65-mile bike tour of scenic South Jersey starting in Center City Philadelphia and ending in Atlantic City. Proceeds benefit the K-6 Educational Programs at Project H.O.M.E.'s Honickman Learning Center and Comcast Technology Labs. Ride ends with an outdoor patio party with food and drink, music and prizes. Return transportation for bike and rider available.

Contact Irish Pub 215-568-5603 or www.irishpubphilly.com for details and registration.



SUPPORT OUR BUSINESSES!

These businesses, located at 1515 Fairmount Avenue, provide employment and job training for formerly homeless men and women.

BACK HOME CAFÉ AND CATERING

Summer is around the corner...check out our new menu items and daily specials.

For more information on the café or catering, email cateringmanager@projecthome.org or call 215-232-6311.

Hours: M – F, 8:30 am – 2:30 pm

OUR DAILY THREADS THRIFT SHOP

Looking for a bargain? The first Tuesday of the month is Dollar Day.

Now accepting new to nearly-new Spring and Summer clothing! Call 215-232-6322 to make a donation appointment.

Hours: M – F, 9:00 am – 5:00 pm



“Hot Car” by Dessie Sneed

9TH ANNUAL PROJECT H.O.M.E. SUMMER ART SHOW

**June – August 2005
1515 Fairmount Avenue**

**Opening Night Reception
Friday, June 24
5:00 – 7:30 pm
Light refreshments**

For details, call Martin Molloy, Occupational Services Coordinator, at 215-232-7272 x3034.

A copy of the official registration and financial information may be obtained from the Pennsylvania Department of State by calling toll-free, within Pennsylvania, (800) 732-0999. Registration does not imply endorsement.



PROJECT H.O.M.E.
1515 Fairmount Avenue
Philadelphia, PA 19130

NONPROFIT ORG.
US POSTAGE
PAID
PHILADELPHIA, PA
PERMIT No. 01219